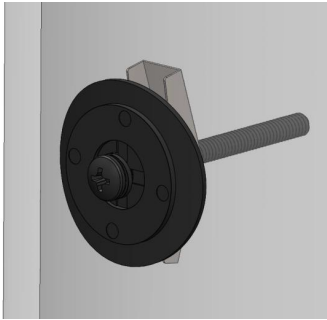
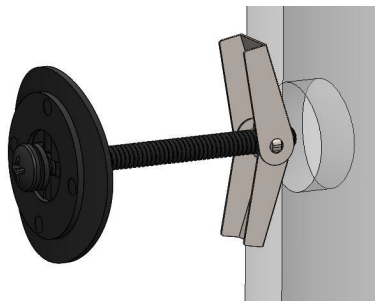


Pole Plug Assembly Instructions

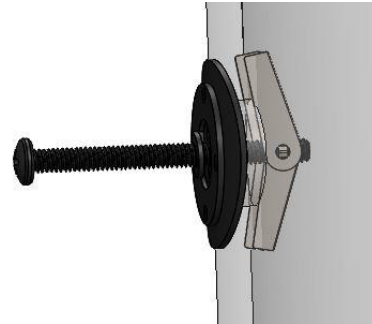
Apex Power Products
PN APPG-02



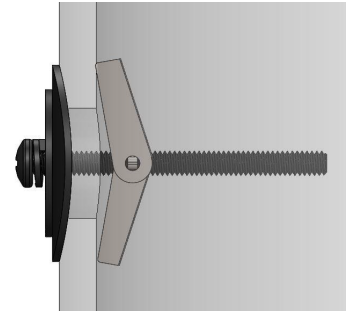
Assembled View



Step 1: Insert assembly into desired hole. Toggle nut wings will fold back and allow passage through hole.



Step 2: Pull assembly from fastener head outward after toggle nut engagement. While holding fastener head push plastic retainer washer and curved washer tight against the pole rounded face.



Step 3: Use the appropriate tool for the fastener with a screw gun or handheld driver. Tighten until split lock washer is compressed.

Scan For Installation Video



www.apexpp.com/pole-plug-assembly